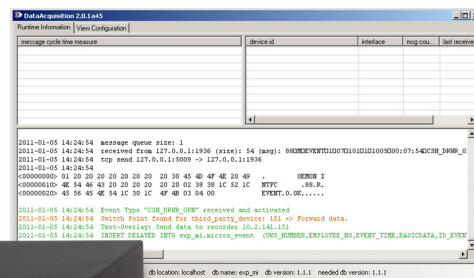


SeMSy® III Interface Server Hardware

Server, Core2Quad 2.66 GHz, 4 GB DDR2, 1000 GB HDD, DVD+RW, 3 HU

SeMSy® III

SeMSy® III is a high-performance and future-proof video management system with optimum user friendliness. It offers a comprehensive range of functions, including the display of live images, various search options within the footage, the control of PTZ cameras and an easy archiving of relevant sequences.



The **SeMSy® III Interface Server Hardware** is equipped with the operating system **Windows 7** and perfectly adjusted for the integration into a **Professional** or **Enterprise SeMSy® III Video Management System**.

In connection with the optional **SeMSy® III Interface Server Software** it is an interface between external devices and a SeMSy® III Video Management System. The interface software receives data from external devices (e.g. cash register, access control, dealing shoe) via Ethernet and stores them in the integrated SQL data base. The received data can be processed and forwarded to various devices in the SeMSy® III Video Management System (recorder, SeMSy® III PGuard 7 Server, SeMSy® III Workstation) in order to trigger an action.

The **SeMSy® III Interface Server Hardware** is a stand-alone device and can be installed and operated in a 19" rack using the optionally available 19" bracket.

Features

- Operating system Microsoft Windows 7
- CPU Intel Core2Quad 2.66 GHz
- Working memory 4 GB DDR2
- Hard disk drive 1000 GB
- Optical drive DVD+RW
- DIN EN 50130-4 compliant
- Application SeMSy® III Interface Server Software optionally available
- Compatible with DMS, DLS, VNS, VNB, DMX recorders
- Compatible with DIS-2 encoder and decoder
- Compatible with all SeMSy® III Workstations
- Suitable for SeMSy® III Professional Package
- Suitable for SeMSy® III Enterprise Package

Hardware	
003307	SeMSy® III Interface Server Hardware Server, Core2Quad 2.66 GHz, 4 GB DDR2, 1000 GB HDD, DVD+RW, 3 HU
Software	
003499	SeMSy® III Interface Server Software Dongle for the installation of an interface server
Accessories	
000283	RAID 1 RAID 1 for devices with 2× HDDs of the same capacity, only ex factory
000010	19" Bracket 19" bracket for the installation of DMS, DVS, PVS IV, PVS 7

SeMSy® III Interface Server Hardware

Server, Core2Quad 2.66 GHz, 4 GB DDR2, 1000 GB HDD, DVD+RW, 3 HU

Specifications

Software

Operating system Windows 7
OS languages English, German, French, Spanish, Italian (others on request)

Optional Software

Application SeMSy® III Interface Server Software
Application language English
Database SQL
Functions and features Data base for local configuration and external data integrated
Connection of up to 500 external devices via Ethernet
Processing and forwarding of messages in real time
Receiving of configuration data from the SeMSy® III Setup Server

Hardware

CPU Intel Core2Quad 2.66 GHz
Memory 2× 2 GB DDR2
Hard disk drive 1× 3.5" 1000 GB, exchangeable
RAID level –
Hot plug –
Hot swap –
Drive DVD+RW
Fan 2× with automatic speed adaptation

Interfaces

Video OUT 1× VGA, 2× DVI
Max. 2 outputs at a time (2× DVI or 1× DVI and 1× VGA)
Audio IN 1× 3.5 mm phone jack (not active)
Microphone IN 1× 3.5 mm phone jack (not active)
Audio OUT 1× 3.5 mm phone jack (not active)
USB 7× USB 2.0
Ethernet 2× RJ45, 10/100/1000 Mbps
Serial 1× RS232
PS/2 Mouse, keyboard

Electrical Data

Voltage supply 110/230 V AC ±10%, 50/60 Hz
Power consumption Max. 130 W
Heat power Max. 444 BTU/h

Mechanical Data

Dimensions (W × H × D) Approx. 425 × 130 × 446 mm (16.6" × 5.1" × 17.5") (with feet)
Approx. 425 × 122 × 446 mm (16.6" × 4.8" × 17.5") (without feet)
Height units 3 HU
Weight Approx. 10 – 12 kg (22 lb – 26 lb)

Ambient Data

Temperature +5°C up to +40°C (41°F – 104°F)
Recommended temperature +20°C up to +25°C (68°F – 77°F)
Humidity 5 – 70% RH, non-condensing
Atmospheric load Dust-free

Approvals and Certifications

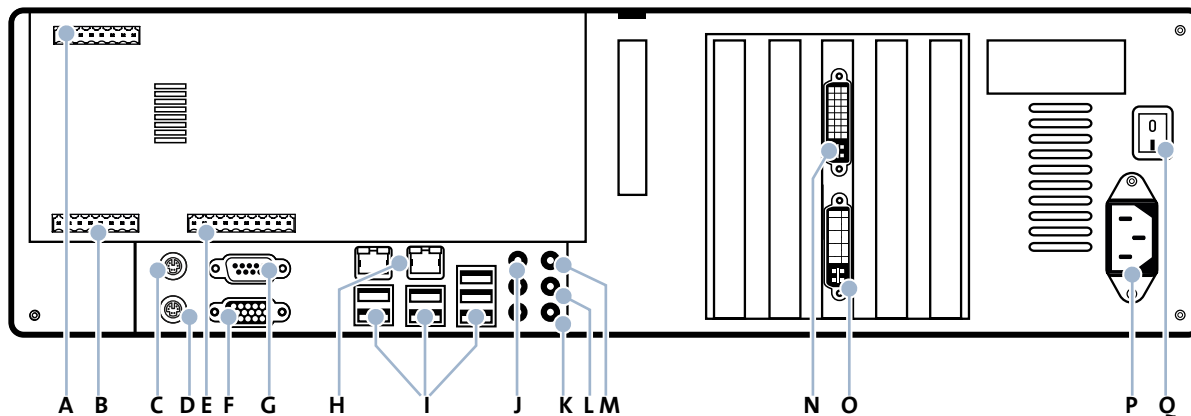
CE, DIN EN 50130-4, FCC, CA

SeMSy® III Interface Server Hardware

Server, Core2Quad 2.66GHz, 4GB DDR2, 1000GB HDD, DVD+RW, 3HU

Connections

The number of the connections can differ depending on the ordered equipment or device variant. The following description refers to a device with full equipment and optional connectors.



A Not Active

Weidmüller 8 pins

B Not Active

Weidmüller 8 pins

C Mouse

PS/2, green

D Keyboard

PS/2, violet

E Not Active

Weidmüller 10 pins

F Video OUT VGA

Mini-D-SUB, 15-pole, VGA, 1024 × 768

G Serial Interface COM 1

D-SUB, 9 Pins, RS232

H Ethernet Interface

2× RJ45, 10/100/1000Mbps

I USB Interface

7× USB 2.0, type A

J Not Active

3× 3.5 mm phone jack

K Microphone IN (not active)

3.5 mm phone jack, red, 4,3kOhm, 2,828V_{pp}

L Audio OUT (not active)

3.5 mm phone jack, green, 1 kOhm, 2,828V_{pp}

M AUX / Line IN (not active)

3.5 mm phone jack, blue, 16 kOhm, 2,828V_{pp}

N Video OUT DVI 1

Dual-Link (24 + 5), DVI-I, 2560 × 1600 (not suitable for VGA adapter)

O Video OUT DVI 2

Dual-Link (24 + 5), DVI-I, 2560 × 1600 (not suitable for VGA adapter)

P Mains Connection

IEC C14 socket, 110/230V AC ±10%, 50/60 Hz

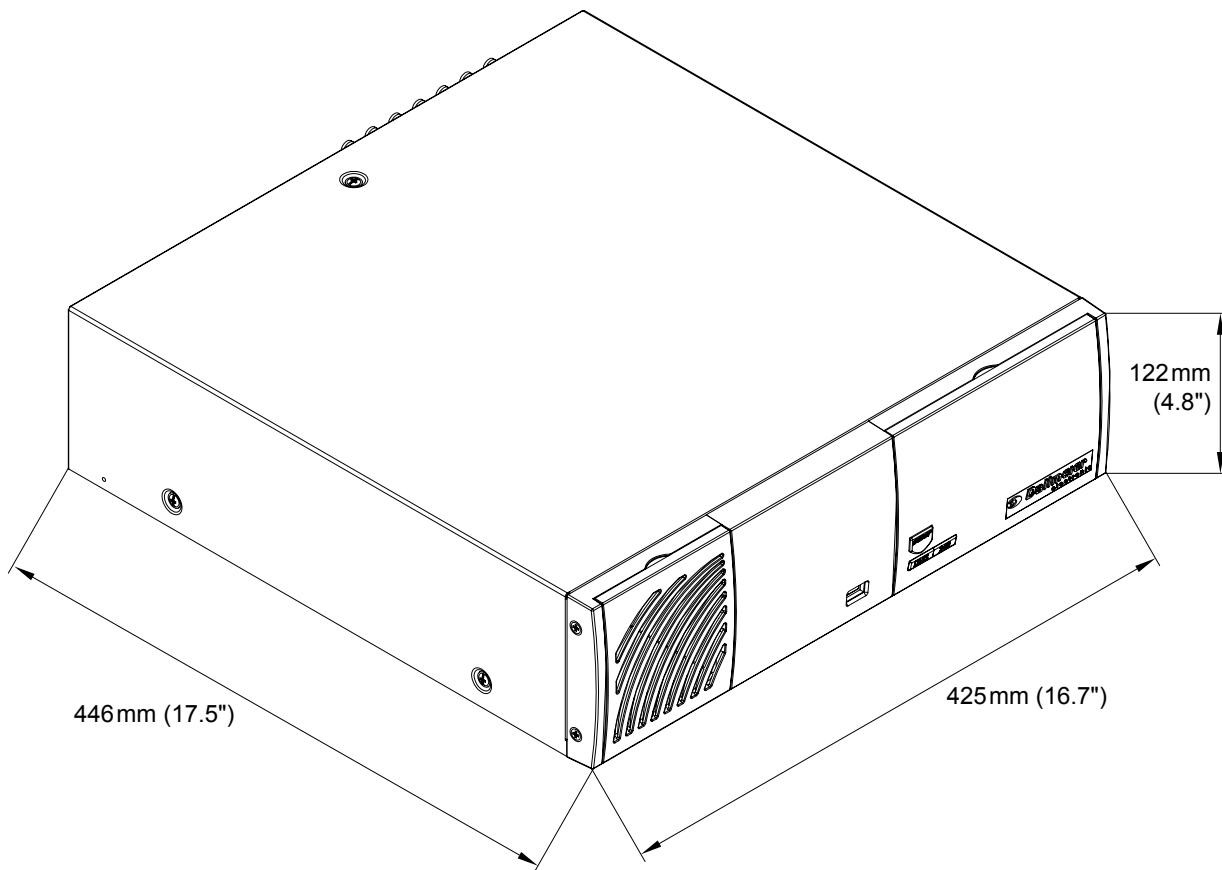
Q Mains Switch

SeMSy[®] III Interface Server Hardware

Server, Core2Quad 2.66GHz, 4GB DDR2, 1000GB HDD, DVD+RW, 3HU

Dimensions

Housing



19" Bracket

